

Downham

Enter Downham with St Lawrence's church on the right you are presented with one of the most beautiful views in Lancashire. The stone cottages slope down to the beck melding into a pastoral landscape of vivid greenery. This walk takes you in an anti-clockwise direction and the spectacular views are dominated by the brooding presence of Pendle Hill.



START: Downham Village Car Park, BB7 4BS

WALK DISTANCE: 3½ miles (5.5km)

WALK TIME: 1½-2½ hours

MAP: OS OL41 The Forest of Bowland

DIRECTIONS TO THE START OF THE WALK BY CAR

From the hotel head to the A59 and turn left and follow across the roundabout for 6 miles. Turn left for Clitheroe and Chatburn on the A671 Pimlico Link Road. At the roundabout turn right for Chatburn. On reaching the village turn right into Downham Road and proceed for a mile to arrive in Downham. The car park is located at the far end of the Main Street.



Point of Interest

Little has changed in the village of Downham since it was used as the main location in the 1961 film 'Whistle Down the Wind' starring Bernard Lee, Alan Bates and Hayley Mills.

The plot centres on a group of children who in the mistaken belief that an escaped convict (Alan Bates) is Jesus, protect him from the authorities.

Hayley Mills (14 at the time the film was made) played Kathy the eldest of the children. However many of the others came from local primary schools nearby - especially in Chatburn.

More recently Downham featured in the TV series 'Born and Bred' starring James Bolam.

Of course the other point of interest that has to be mentioned are the rather unusual car park toilets - especially the gents!

WALK DIRECTIONS:

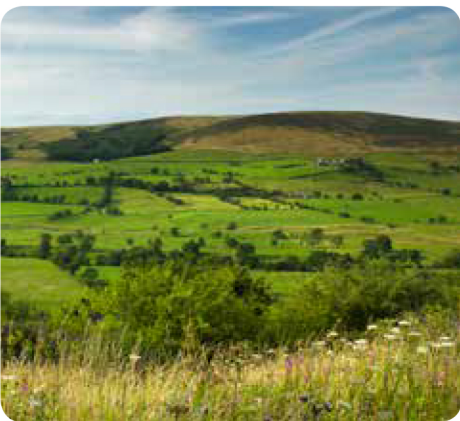
1 From the car park turn right onto West Lane and almost immediately right onto a footpath. After a gate the path leads across fields at first with the fence line on the right.

After passing Longlands Wood (also to the right) go through a kissing gate leading into a wide meadow. Here bear slightly left to pick up a waymarked fence end and then continue to a kissing gate in a corner.

Continue through the kissing gate and cross the next field aiming towards the end of Worsaw Hill. After a further kissing gate the path follows a stone wall on the left.

Just before Worsaw End House turn left through a metal gate and cross diagonally left to pick up a farm drive. Follow this to you arrive at the junction with West Lane.

2 Turn left and then immediate right onto a farm lane which leads up to Barkerfield Farm. On approaching the farm follow the lane as it bears left towards Hookcliffe, a large farm



complex which is approximately 300 yards beyond Barkerfield. Where the track bears left towards the main farm buildings pass through a kissing gate situated to the right of a wooden gate to join a broad, grassy track below the open fellside.

After the next gate - while the track ceases to be grassy - remain on it until it brings you to the junction with Pendle Road. Turn right and walk along the road for 200 yards before turning left, opposite a small lay-by, through a kissing gate onto a footpath.



3 The path soon leads steeply down into a gully before gently climbing up to the left bringing you to a broad grassy shelf adjacent to a stone barn and a pair of wooden benches. A more inviting place for a picnic we do not know!

Cross a stone stile situated in the wall below the barn and follow straight ahead, keeping close to the right fence line to cross a large pasture to its far right corner.

Continue in the same direction until you arrive at a wooden gate leading to the drive of Clay House (to the right). Cross the drive, pass through a gate and continue in the same direction.



Cross a small footbridge and keep straight ahead to the broad meadows close to Downham Beck (on the right). Follow the stream to reach the edge of Downham Village. When you arrive on Main Street turn left for the car park.